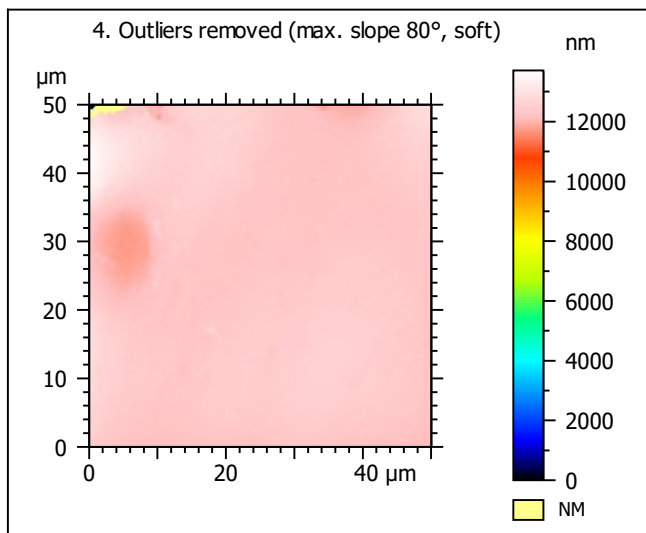
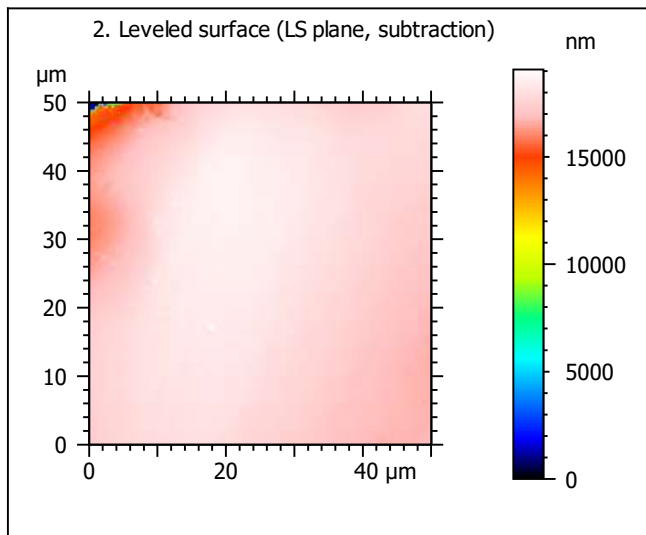
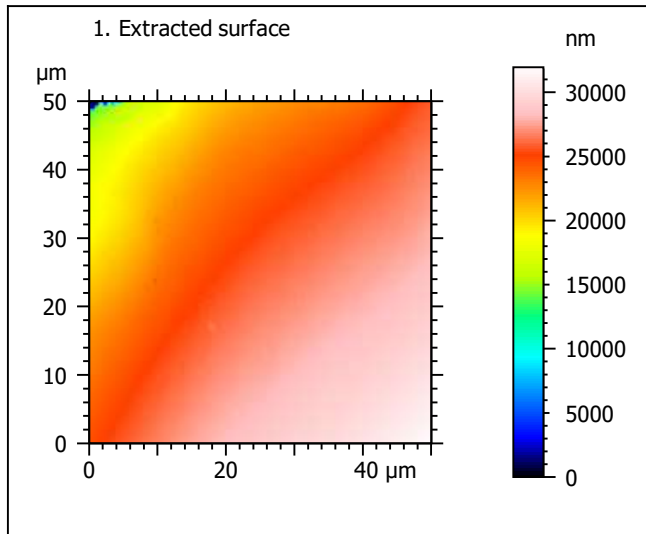
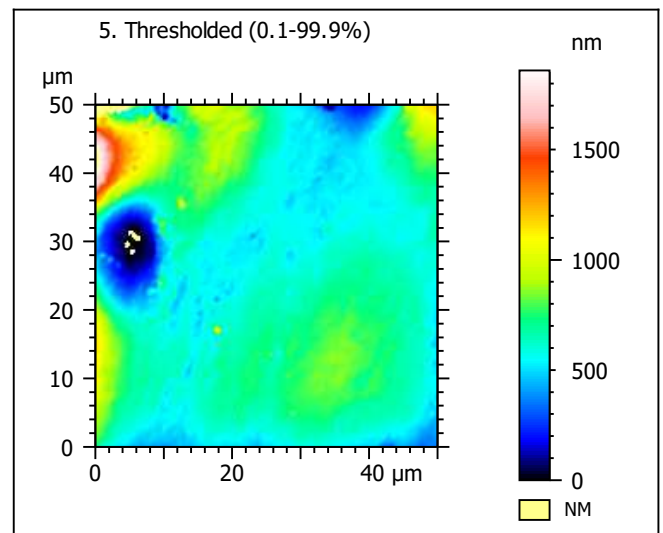
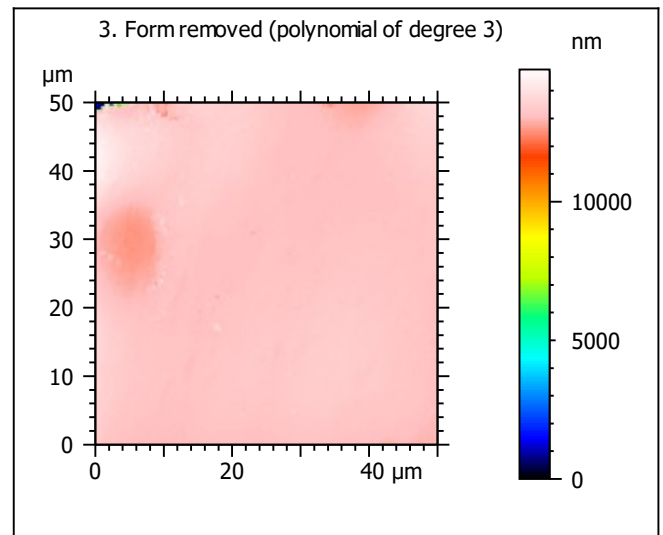


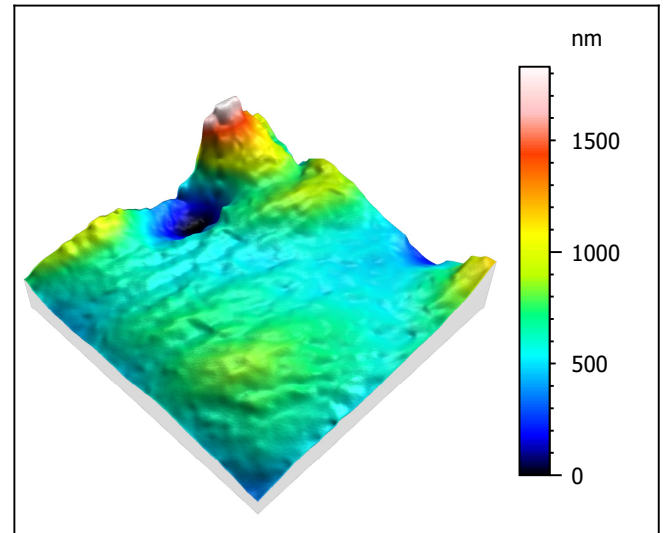
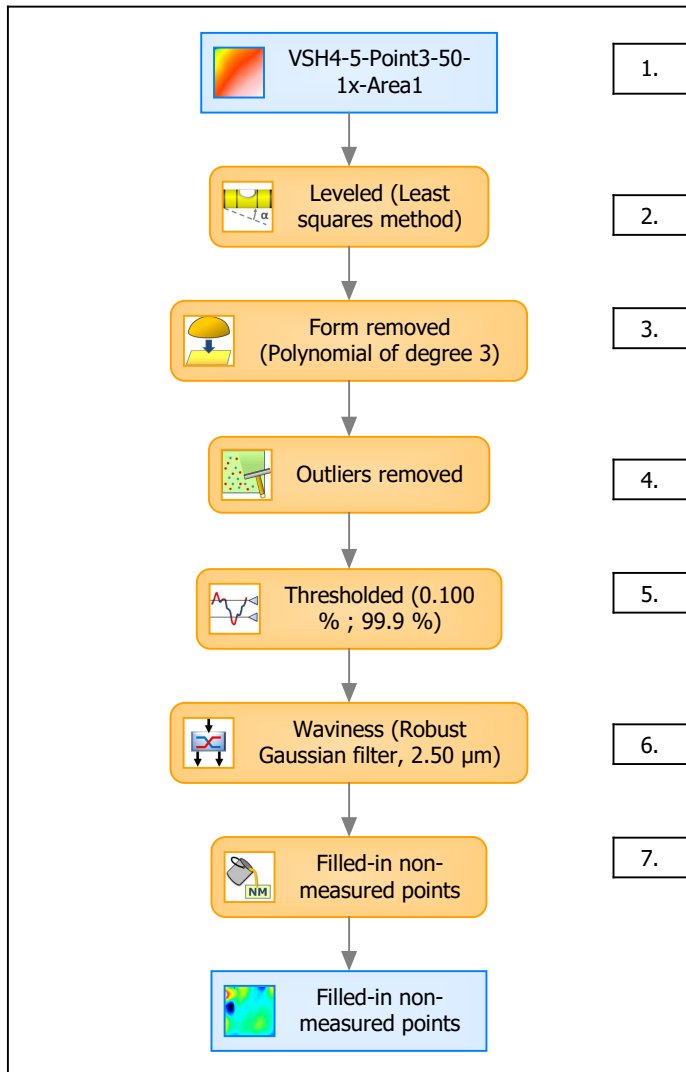
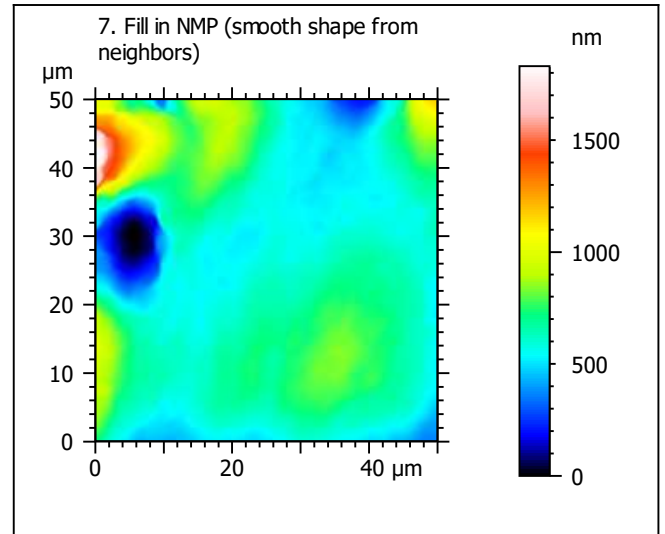
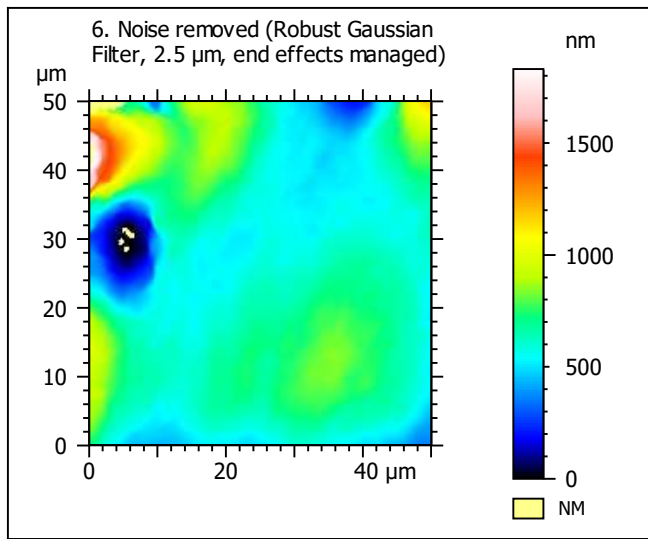
Template to process all extracted 50x50 μm surfaces, acquired with the LEXT 4000 with the 50x/0.95 objective at 1x zoom

A. Processing



Identity card			
Name:	VSH4-5-Point3-50-1x-Area1		
File path:	D:\Data\Anto...\VSH4-5-Point3-50-1x-Area1.sur		
Axis:	X		
Length:	50.0	μm	
Size:	201	points	
Spacing:	0.250	μm	
Axis:	Y		
Length:	50.0	μm	
Size:	201	points	
Spacing:	0.250	μm	
Axis:	Z		
Length:	31953	nm	
Size:	24163	digits	
Spacing:	1.32	nm	
NMP ratio:	0.00 % (0 Pts)		





Identity card			
Name:	VSH4-5-Point3-50-1x-Area1 > Levelled (Least...		
Axis:	X		
Length:	50.0	μm	
Size:	201	points	
Spacing:	0.250	μm	
Axis:	Y		
Length:	50.0	μm	
Size:	201	points	
Spacing:	0.250	μm	
Axis:	Z		
Length:	1830	nm	
Size:	1384	digits	
Spacing:	1.32	nm	
NMP ratio:	0.00 % (0 Pts)		

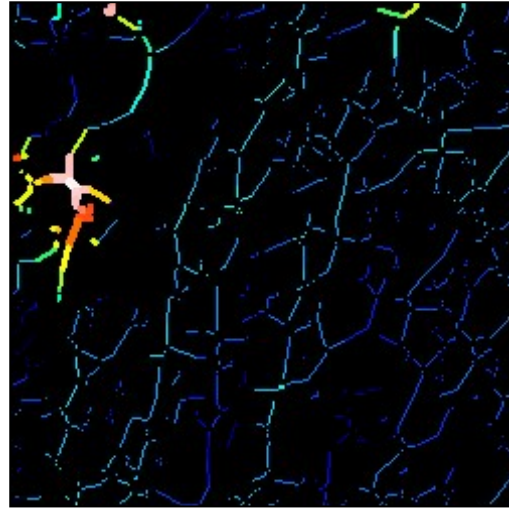
Analyses:
8. ISO 25178
9. Furrow
10. Texture isotropy and direction
11. SSFA

B. Analyses

8. ISO 25178-2 parameters on surface #7

ISO 25178		
Height Parameters		
Sq	194	nm
Ssk	1.18	
Sku	10.0	
Sp	1184	nm
Sv	647	nm
Sz	1830	nm
Sa	128	nm
Functional Parameters		
Smr	10.9	%
Smc	194	nm
Sxp	391	nm
Spatial Parameters		
Sal	6.97	μm
Str	0.720	
Std	81.2	°
Hybrid Parameters		
Sdq	0.0647	
Sdr	0.206	%
Functional Parameters (Volume)		
Vm	0.019	μm ³ /μm ²
Vv	0.213	μm ³ /μm ²
Vmp	0.019	μm ³ /μm ²
Vmc	0.109	μm ³ /μm ²
Vvc	0.191	μm ³ /μm ²
Vvv	0.0219	μm ³ /μm ²

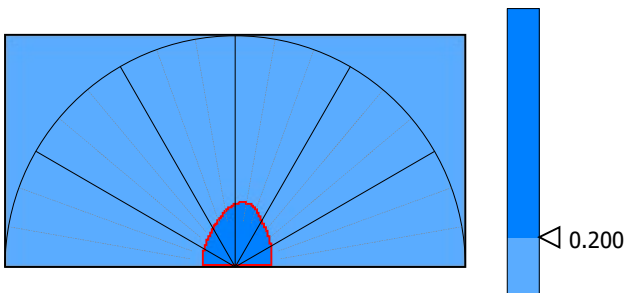
9. Furrow analysis surface #7



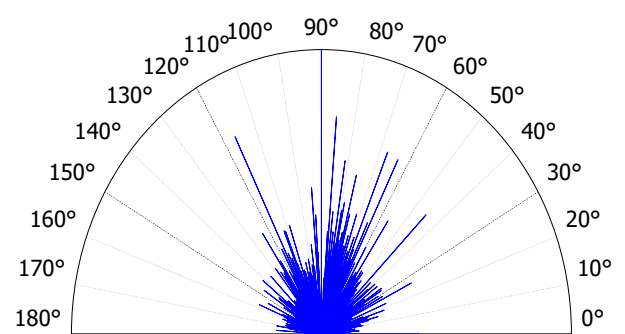
All furrows are shown.

Parameters	Value	Unit
Maximum depth of furrows	353	nm
Mean depth of furrows	74.1	nm
Mean density of furrows	2372	cm/cm2

10. Texture isotropy and direction on surface #7

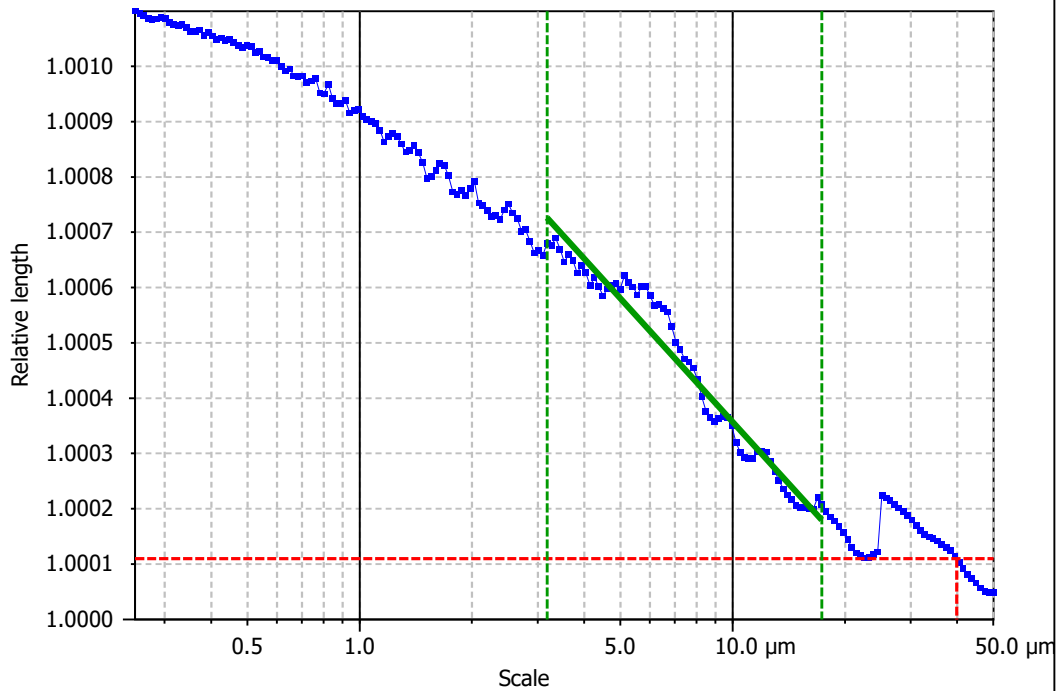


Parameters	Value	Unit
Isotropy	51.9	%
Periodicity	*****	%
Period	*****	μm
Direction of period	*****	°



Parameters	Value	Unit
Isotropy	72.0	%
First Direction	90.0	°
Second Direction	116	°
Third Direction	67.5	°

11. SSFA on surface #7

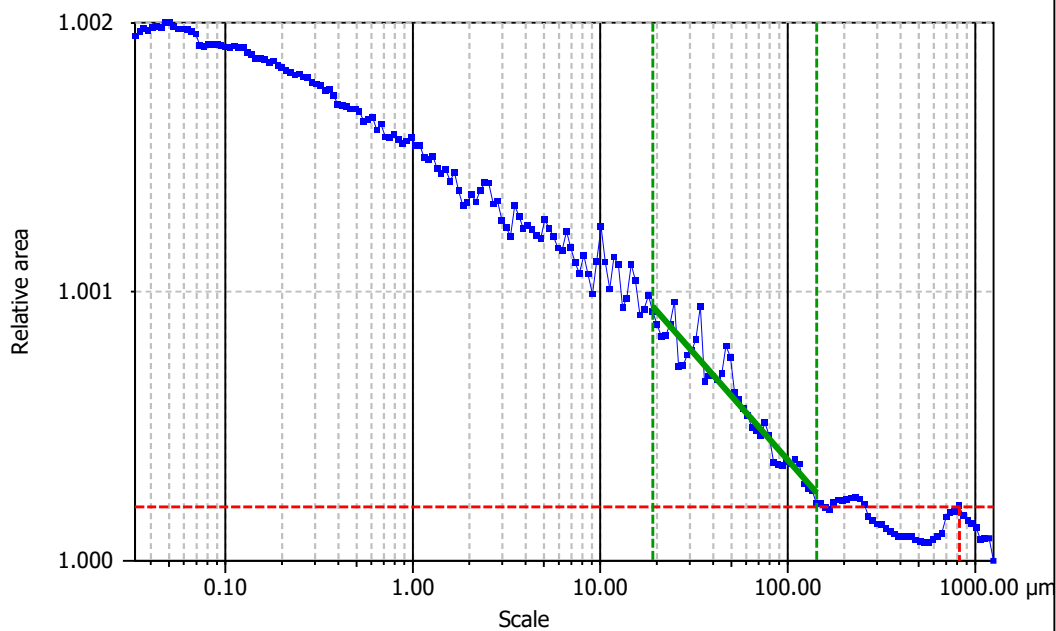


Information

Method Length-scale (rows)

Parameters

Value	Unit	Comment
epLsar	0.0179	(1.8 μm, 5°)



Information

Method Area-scale (four corners)

Parameters

Value	Unit	Comment
Asfc	0.344	
Smfc	54.9	μm ²
HAsfc9	7.87	(3x3)
HAsfc81	NaN	(9x9)